




JUVENIL Y CADETE


| | | | |
|---|----------------------|--------------------|-------|
|  | NATACIÓN | 1 VUELTA | 450m |
|  | CICLISMO | 2 VUELTAS DE 4.5km | 9km |
|  | CARRERA A PIE | 1 VUELTA | 2.1km |

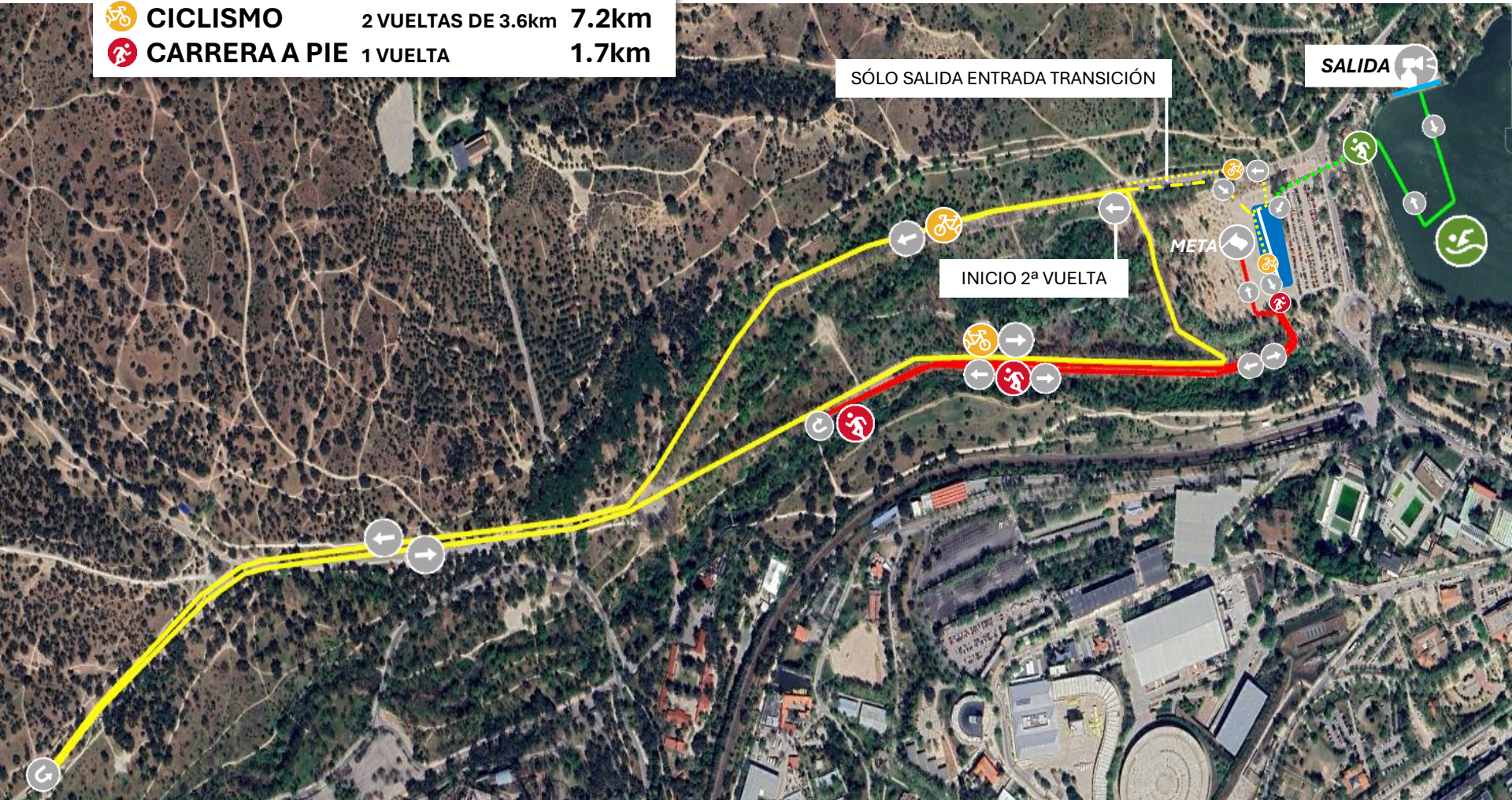


**CIRCUITOTRIATLÓN
ESCOLAR**



INFANTIL

| | | | |
|---|----------------------|--------------------|--------------|
|  | NATACIÓN | 1 VUELTA | 300m |
|  | CICLISMO | 2 VUELTAS DE 3.6km | 7.2km |
|  | CARRERA A PIE | 1 VUELTA | 1.7km |

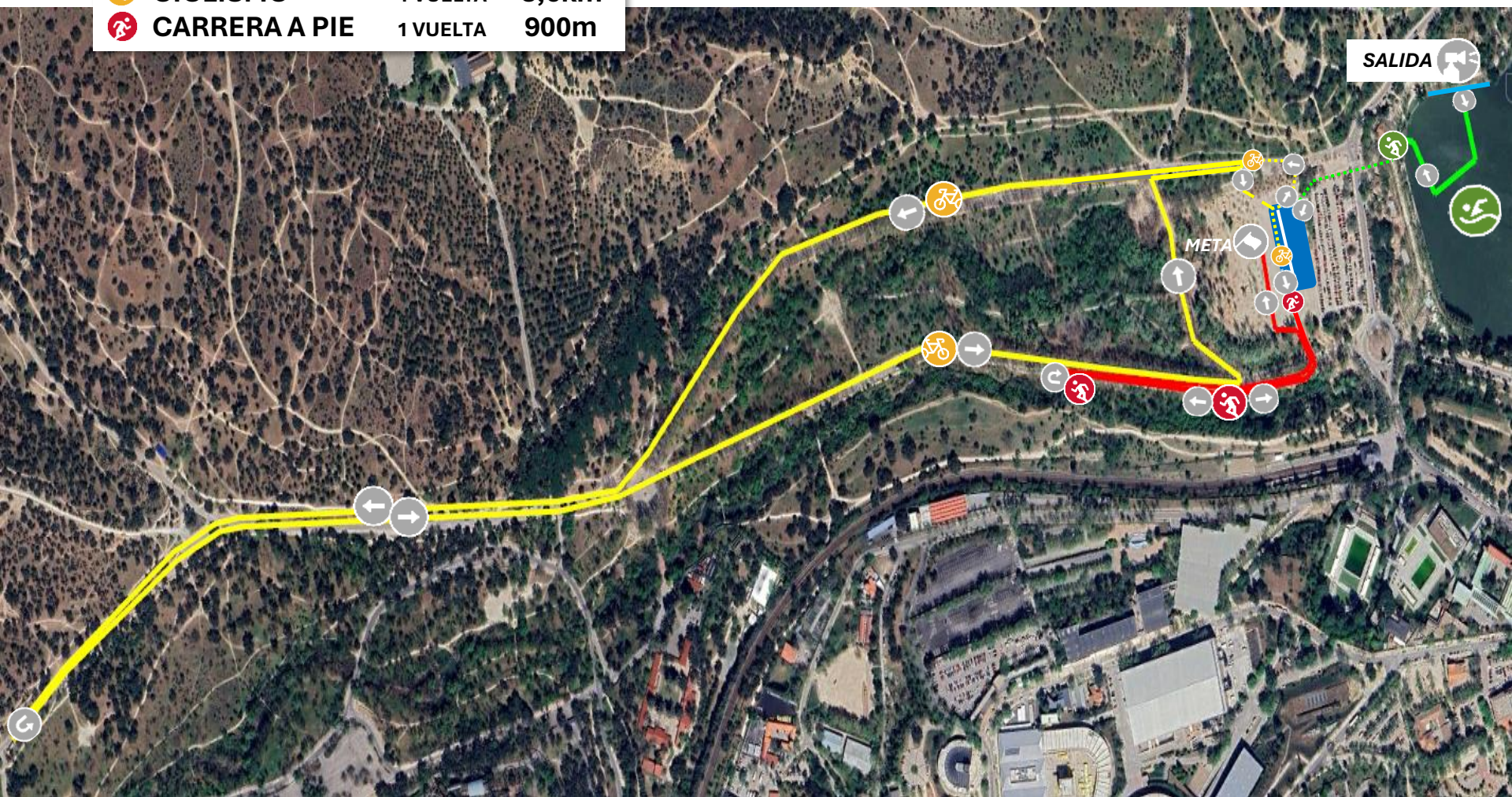


**CIRCUITOTRIATLÓN
ESCOLAR**



ALEVÌN

| | | | |
|---|----------------------|----------|--------------|
|  | NATACIÓN | 1 VUELTA | 200m |
|  | CICLISMO | 1 VUELTA | 3,6km |
|  | CARRERA A PIE | 1 VUELTA | 900m |



CIRCUITOTRIATLÓN
ESCOLAR



BENJAMÍN

| | | | |
|---|----------------------|----------|-------------|
|  | NATACIÓN | 1 VUELTA | 100m |
|  | CICLISMO | 1 VUELTA | 2km |
|  | CARRERA A PIE | 1 VUELTA | 450m |



CIRCUITOTRIATLÓN
ESCOLAR



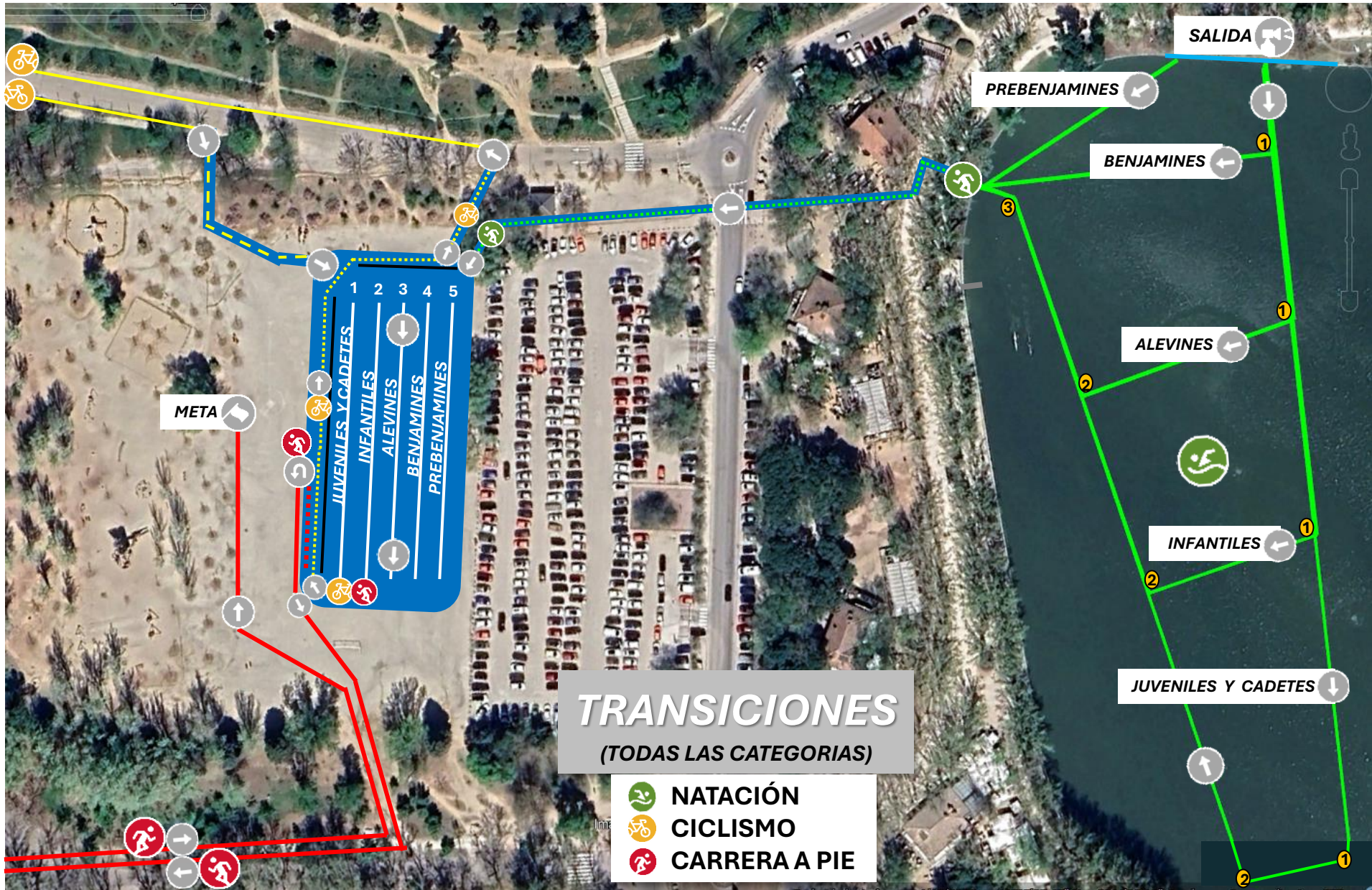
PREBENJAMÍN

| | | | |
|---|----------------------|----------|------|
|  | NATACIÓN | 1 VUELTA | 60m |
|  | CICLISMO | 1 VUELTA | 1km |
|  | CARRERA A PIE | 1 VUELTA | 240m |



CIRCUITOTRIATLÓN
ESCOLAR





TRANSICIONES

(TODAS LAS CATEGORIAS)

-  NATACIÓN
-  CICLISMO
-  CARRERA A PIE

**CIRCUITO TRIATLÓN
ESCOLAR**

